

Think GAIA
For Life and the Earth

SANYO

Ultra Portable Multimedia Projector PLC-XU116



A Bright, Portable Projector with High-Speed Wireless Image Transfer



Bright 4,500 Lumens

Industry's highest brightness*1 for its class, at 4,500 lumens, thanks to a 275W high-output lamp. New optical engine uses advanced cooling technology. Incredibly compact, weighing just 3.5 kg, and easy to carry. Versatile-designed for use in a variety of meeting spaces and classrooms. High contrast ratio of 1000:1*2, thanks to adopting an inorganic LCD panel for the optical engine. Brightness and contrast ratio combine to enable bright, big-screen projection with high quality image.



*1 As of December 21, 2009, for LCD projectors of 4 kg or less

*2 When Lamp Mode "High", and Image Mode "Dynamic" are selected

IEEE802.11n high-speed wireless LAN

Wireless transmission speed has been further increased with IEEE802.11n high-speed wireless LAN capability.

"Simple Wireless Setting"*3 via USB memory

By inserting the included USB memory in the computer, only one*4 click is required to automatically*5 connect to the projector wirelessly. Simple wireless connection allows novices to setup and use for professional presentations. USB terminal allows use with computers without CD-ROM or DVD-ROM drives. No special programs or drivers to install. Connect wirelessly to multiple computers, or up to five projectors to one computer. Wireless range of up to 30 meters*6 allows a room free from cumbersome cables.

*3 For systems with wireless network LAN (IEEE802.11b/g) capability

*4 Two clicks or more may be necessary depending on the computer used

*5 Setup may not be completed automatically, depending on the initial settings of the computer used

*6 Wireless up to 30 meters (actual distance depends on a variety of environmental conditions that can affect signal strength)

Use of security type "WPS"(Wi-Fi Protected Setup)

By using WPS (Wi-Fi Protected Setup), the communication via ESSID and WPA2 security type between the Wireless LAN access point and the projector can be configured without complicated setting procedures.

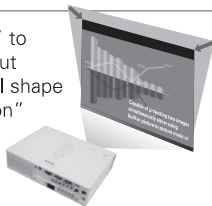
USB Display

Connecting to a PC with only a USB cable enables the projector to generate both images and audio output. No need to use two cables for images and audio output separately.

* Install the attached application program in a PC.

Easy Setup Functions

The PLC-XU116 provides the "Auto Setup Function" to reduce setup time. This function searches for an input signal and detects projector incline to correct vertical shape distortion. In addition, the "Screen Guidance Function" enables projector setup based on the displayed guidance. This function provides all users an easy guide to projection.



Corner Keystone Correction

The Corner Keystone Correction Function eliminates the trapezoidal image distortion that is caused by projection at an angle. Beautiful image projection is possible by adjusting the four corners using the buttons on the main unit or remote control to eliminate trapezoidal distortion.

* Keystone correction : Vertical +/- 40 degrees , Horizontal +/- 30 degrees

* Auto Keystone Correction: Vertical +/-20 degrees

Other Features

- Wide-Range 1.6x Zoom
- 360-Degree Tilt Angle
- USB memory viewer
- PJ Link compatibility
- 17-Language on-screen menu
- Custom startup logo
- User logo (screen capture)
- No show
- Freeze
- Presentation timer



All products manufactured by the Projector Division of SANYO's Digital System Company employ a quality management system that has undergone the inspection and registration process of the ISO 9001 international standard.

Specifications

| | |
|------------------------|---|
| Model name | PLC-XU116 |
| Panel | 0.8 inch TFT p-Si x 3 with Micro Lens |
| No. of pixels | 2,359,296 (1024 x 768 dots) x 3 |
| Projection lamp | 275 W |
| Brightness (typical)*1 | 4500 lm (Lamp mode "High") |
| Contrast*1 | 1000:1 (Lamp mode "High" & "Dynamic mode") |
| Uniformity*1 | 85 % (corner to center) |
| Projection lens | F1.7 - 2.5, f=19.2 - 30.2 mm(0.8-1.2inch) |
| Screen size | 40" - 300" |
| Throw distance | 0.9 m-11.5 m(3.0 - 37.7ft), 100" at 2.4-3.8 m(7.9 - 12.5ft) |
| Zoom / Focus | 1:1.6 Manual driven U:D = 9 : 1 |
| SD / HDTV signals | 480i, 480p, 575i, 575p, 720p, 1080i and 1080p(Digital) |
| Color systems | PAL / SECAM / NTSC / NTSC4.43 / PAL-M/N |
| Video signal | Composite, S-Video, D-sub 15pin for Component |
| Video terminal | RCA : Composite Video, Mini-DIN 4-pin : S-Video |
| Computer compatibility | True XGA up to WUXGA(compression) |
| Computer terminal | DVI-I & Dsub-15 for Input, D-sub15 for Monitor Out |
| Audio | RCA (L/R) for Video Input Mini-Jack (Stereo)x2 for Computer Input Mini-Jack (Stereo) for Output (variable) |
| Communication terminal | D-sub9 Control Port (RS-232C), USB type A/B, R/C Jack |
| Presentation tool | Freeze / Digital Zoom / No Show / Page Up/Down / etc |
| Other features | Progressive, 3-2 & 2-2 pull down, LTI & CTI, User Logo Security : PIN code lock, Key lock USB Display, WPS (Wi-Fi Protect Setup) |
| Scanning frequency | H / V sync 15 - 100 kHz, 50 - 100 Hz Dot clock 140 MHz(Analog), 170MHz(Digital) |
| Sound output | 1.0 W Mono |
| Voltage | 100-120V, 200-240V AC |
| Power consumption | 100-120V AC : 364W/0.5W(Standby Eco) 200-240V AC : 346W/0.9W(Standby Eco) |
| Dimensions (W x H x D) | 334.2 x 78.4 x 257.5 mm (13.2 x 3.1 x 10.1 inch) (not include protruding parts) |
| Weight | 3.5 kg (7.7 lbs) |
| Included accessories | Quick reference guide , User's manual (CD-ROM) , CD-ROM read me note, UL cable card, PIN code label , Computer cable (Dsub15-Dsub15) , Power cord (Detachable), Remote control, AAA Battery x 2 CD-ROM (Application software for Network), Soft carrying bag, Strap for lens cap Easy wireless setup software Ver.1.20 (USB Memory) / Storage case for USB Memory |

*1 Measurement, measuring conditions, and method of notation all comply with ISO 21118 international standards.
* Replacement Lamp Type No.: POA-LMP111 * Product appearance and specifications are subject to change without notice.
* AIP/CLP product names and company names are trademarks or registered trademarks of their respective companies.

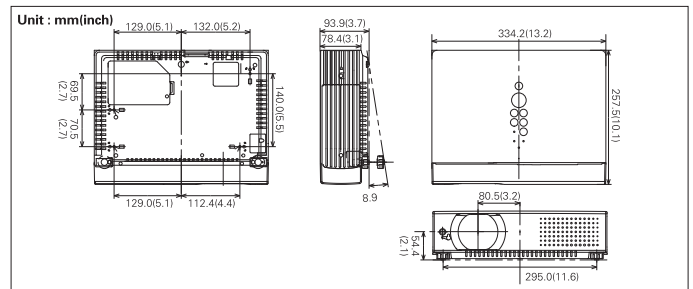
Terminals



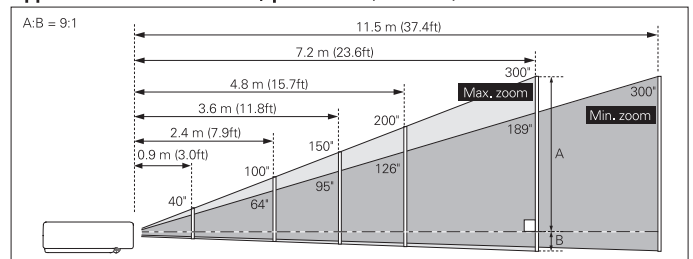
Remote control



External dimensions



Approximate throw distance/ picture size(1.6x zoom)



| Screen size (W x H) mm | 40" | 100" | 150" | 200" | 300" |
|------------------------|--------------|----------------|----------------|----------------|----------------|
| 4:3 aspect ratio | 813 x 610 | 2032 x 1524 | 3048 x 2286 | 4064 x 3048 | 6096 x 4572 |
| Tele | 1.5m (4.9ft) | 3.8 m (12.5ft) | 5.7 m (18.7ft) | 7.6 m (24.9ft) | 11.5m (37.4ft) |
| Wide | 0.9m (3.0ft) | 2.4 m (7.9ft) | 3.6 m (11.8ft) | 4.8 m (15.7ft) | 7.2 m (23.6ft) |



SANYO's Digital System Company has received ISO 14001 certification for the environmental management system used in its factory.



Pixelworks ICs are used in this projector

<http://www.sanyo-lcdp.com>

Caution: Please consult the instruction manual to ensure safe and proper operation of the product.

Distributed by:



SANYO Electric Co., Ltd.
Digital System Company

© 2009 SANYO Printed in Japan 2009.12 NL
SML150